

17 Day Self-drive Program



DAY 1 - Arrival in Auckland

Super Shuttle
Dominion Rd
Auckland

Transfer Auckland Apt to Central City

Operates:
Operates daily
Departure: on demand
Vehicles take 10-12 passengers

Important Information:

On arrival at Auckland Airport please look for the Super Shuttle vehicle waiting for you outside the airport terminal
2 suitcases per person. Charges apply for extra pieces of luggage including surfboards, bicycles etc

DAY 1 - Auckland

Auckland City Hotel
157 Hobson Street
Auckland

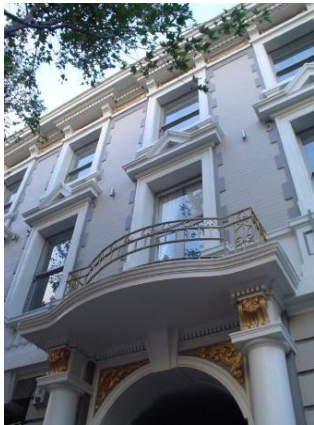
Standard Room - 1 Night

Includes: Cooked Breakfast

Check in: 2.00pm
Check out: 10.00am

Description:

Erected in 1912, the building has been extended and transformed into a captivating boutique Hotel. Retaining its iconic facade with its ideal combination of inventive design and traditional efficiency, Auckland City Hotel has retained the character and charm of its past enhanced with a relaxing contemporary decor.



DAY 2 - Auckland to Bay of Islands

Hertz New Zealand

CDAR Toyota Corolla Auto (or sim) - INCLUSIVE - 16 days

Includes: Unlimited kilometres, Loss Damage Waiver ((LDW, provides Accident Damages Cover to the Hertz Vehicle and/or Third Party Property), Airport/ Ferry Concession Recovery Fee (ACFR), Accident Excess Reduction (reduces your excess to nil), 24 hr. roadside assistance, additional drivers.

LDW does not apply when vehicle has been driven off road or on restricted roads.

Excludes: - GPS

- Out of hours pick ups
- Refuelling service, re-fuelling bond
- Optional extras such as babyseats
- A young renters fee of NZD 20.00 per day, per renter will apply for renters between 18 and 20 years of age.
- Premium roadside assistance
- Delivery and collection fees

All extras are to be paid direct. Credit card fees will apply on all payments.

Pick up: 02 Feb 20 Auckland City
Drop off: 17 Feb 20 Queenstown Airport

Changeover Wellington / Picton**Important Information:**

Please ensure you are aware of the different road rules and different driving conditions in New Zealand. Check the guide in www.drivesafe.org.nz for further information. Please also refer to the Land and Transport website for current road conditions, closures and roadworks <http://www.nzta.govt.nz/traffic/>

Please refer to "Terms & Conditions" for more comprehensive information

- Rental day consist of consecutive 24h period.
- Grace period for rental returns is 29 minutes. After that a full days fee applies.
- All rentals are subject to a deposit which covers additional costs such as one way fee, fuel, insurance and optional services. Hertz accepts all major credit cards.
- Hertz cars are not taken on the Interislander ferry, but a new car is collected at the terminal.
- Minimum age is 18
- Full driver's license required.
- An overseas driver's licence, issued in a language other than English, must be accompanied by a current International Drivers Permit (IDP) or where in a country where IDP are not issued, official government approved translation document.
- Renter is required to present a passport upon vehicle pick up
- The driver's name MUST match the name given on the Reservation and the Credit Card must also be in the driver's name.

Roadside Assistance (24 hour service) 0800 633 611 toll free number within NZ. 0064 9 966 9973 for customers with an overseas phone

DAY 2-5 - Paihia

Allegra House
39 Bayview Road
Paihia

Island Suite B&B - 3 Nights
Includes: Continental breakfast

Check in: 1.00pm
Check out: 10.00am

Description:

Allegra House is conveniently located in central Paihia - the heart of the Bay of Islands, overlooking the wharf, shops, banks, restaurants and beach and surrounded by native bush. The purpose built rooms are light and spacious with modern style, quality furniture and fittings and offer spectacular, uninterrupted views of Paihia, Russell and the Bay of Islands. Nature lovers have access to bush with lots of birds including NZ pigeon, fantails, rosellas, morepork and mature trees including rimu, kauri, silver fern, flax, totara, manuka, rewarewa.

Room Description:

Queen bedded room on ground floor, approx 22 m2



Optional Activity Suggestions (Not included in total cost):

Explore NZ: Dune Rider Cape Reinga via 90 Mile Beach Additional Costs 2 Adults NZD267.00

This full day tour in our unique Dune Rider vehicle is the best way to explore the Far North. Let our drivers immerse you in the culture and history of the area, while taking in the amazing scenery.

The Dune Rider vehicle is purpose built to go off-road in comfort with air conditioning, reclining seats, plenty of leg room and sloping floors for great viewing.

Your full day tour begins with an early morning pick up at your accommodation and includes entrance to Gumdigger's Park, a sit down buffet style lunch at Waitiki Landing, visiting Cape Reinga lighthouse to view the meeting of the two oceans, a beach stop on 90 Mile Beach, boogie boarding down huge sand dunes at Te Paki stream and time at the Ancient Kauri Kingdom. Finish the day with fabulously fresh fish and chips at the famous Mangonui Fish Shop, at your own expense.

Operates:

Operates daily, except on Christmas Day

Departure: 7.00am

Return: 6.30pm

Departure Point: Paihia Explore NZ kiosk, Cnr Marsden & Williams Roads

Includes:Lunch

Explore NZ: Discover the Bay Cruise - Hole in the Rock Additional Costs 2 Adults NZD267.00

The four hour Discover the Bay cruise includes dolphin, whale and birdlife viewing, travelling through the world famous Hole in the Rock (conditions permitting), a private island stopover visiting one of New Zealand's most significant Maori "pa" sites (fortified village) and learn about the kiwi recovery programme and conservation restoration on Moturua Island.

Operates:

Operates daily

Departure: 9.00am & 1.30pm (1 Dec - 30 Apr), 10 am (01 May - 30 Nov)

Departure Point: Paihia Wharf - Russell Wharf departures 10 minutes later

Duration approx. 4 hours in the morning; 3 hours in the afternoon

Minimum 2 pax required for guaranteed departure

Please note: In winter no stop off at the islands in the afternoon (1.30pm trip only), return to the mainland one hour earlier

Includes:BBQ lunch

Waitangi National Trust: Day Pass Additional Costs 2 Adults NZD 94.00

Guided Tours

Enhance your visit with a guided tour of all the major treasures at Waitangi. The guides bring the Treaty story to life and introduce you to some of the key personalities and events that have shaped the nation. Many of the guides descend from signatories to the Treaty – they bring a personal connection to Waitangi that will enhance your understanding of the relevance of the Treaty in contemporary New Zealand.

Cultural Performances

The resident performance group gives you a special introduction to New Zealand's unique indigenous culture. Enjoy a fun-filled and spine-tingling performance of waiata (singing), poi, stick games, Māori weaponry, as well as the famous haka. All performances begin with a traditional Māori welcome outside the meeting house. After the show you will have the opportunity to interact with the performers, ask questions and have your photo taken with the group.

Operates:

Operates daily except Christmas Day

Opening hours: 26 December to end of February 9.00 am to 6.00 pm. March to 24 December 9.00 am to 5.00 pm

Guided Tours: available throughout the day. Duration 50 minutes.

Cultural Performances: Regular performances throughout the day. Duration 30minutes.

Admissions are valid for two consecutive days.

Includes:Admission to the Museum of Waitangi, the Treaty Grounds, a guided tour and a cultural performance. The day pass is valid for two days.

DAY 5 - Matakana/Warkworth/Puhi

Warkworth Lodge
8 Falls Street
Warkworth

Blue Villa Room - 1 night
Room Only

Check in: 2.00 pm
Check out: 11.00 am

Description:

A 10 minute drive to Matakana Village & Snells Beach, 45 minutes to Auckland harbour bridge and 1 hour drive to Auckland International Airport. A central location to stay while exploring the Matakana Coast Wine Country, a truly real New Zealand destination where you can meet the locals, taste the local produce and view the stunning scenery.

From modern self-contained motel units to charming villa suites. Warkworth Lodge is situated within walking distance of a good selection of locally owned restaurants and cafes. Enjoy the beautiful rooms, spacious swimming pool, spa and BBQ area.

Room Description:

French doors out to veranda and garden. Ensuite, Queen bed, TV & DVD. Included are all the facilities in the villa. Such as lounge and lodge kitchen, BBQ area and pools.



DAY 6 - Rotorua

Regent of Rotorua Boutique Hotel & Spa
1194 Pukaki Street
Rotorua

Cutie Room - 1 Night

Includes: Cooked Breakfast

Check in: 2.00pm
Check out: 11:00am

Description:

The Regent of Rotorua Boutique Hotel & Spa redefines modern hospitality with a visionary blend of modern design, luxurious facilities and bespoke service to inspire imaginative travellers. Located in the heart of Rotorua, within close walking distance of the lakefront and convention centres and adjacent to the eating precinct, the Regent of Rotorua is the perfect hotel for business or for pleasure.

The Cutie room is very economical in size, but good for one night stay and in stunning surroundings.



Optional Activity Suggestions (Not included in total cost):

Waiotapu Thermal Wonderland: Admission Additional Costs 2 Adults NZD 68.00

Wai-O-Tapu Thermal Wonderland is a geothermal sightseeing attraction just outside of Rotorua. The area is known as New Zealand's most colourful and diverse geothermal sightseeing experience. Its English translation is "Sacred Waters". Here you can view a wide range of features including geysers, mud pools, mineral terraces, colourful hot and cold pools and steaming volcanic lakes. Famous attractions include the Lady Knox Geyser that erupts daily at 10.15am, the Champagne Pool, the Devil's Bath, the Artists Palette and New Zealand's largest boiling mud pool.

Operates:

Operates daily

Opening hours: 8.30am to 5.00pm (last admission is 3.45pm)

Self guided tour duration recommend approx 1.5 hours

Te Puia Rotorua: Tour & Cultural Performance Additional Costs 2 Adults NZD 114.00

The guided tour of Te Puia includes the Carving School, Art and Craft Gallery, and Rotowhio Marae - where the history and significance of the grounds and buildings are explained, and the weaving school. Walk through a recreation of a typical pre-European Maori Village. At the Kiwi Conservation Centre a guide ensures visitors a glimpse of the special creature and explains Te Puia's unique role within a national breeding programme. Explore the geothermal valley. See silica terraces, unique vegetation, mud pools and geysers, and bubbling mud pools varying in temperature, size and colour.

The cultural performance starts with a powhiri, a ceremony of encounter between two parties who meet for the first time, followed by a hongi greeting. The kapa haka is a performance showcasing Maori performing arts. It includes weaponry displays, action songs, world famous Haka (posture dance) and the grace of the poi dance..

Operates:

Opening hours: 8.00 am - 5.00 pm (extended to 6.00 pm November - beginning of April/ Easter)

Guided tours depart 9am - 4pm (5 pm in summer)

Performances 10.15am, 12.15pm, 3.15pm - 45 minute in duration

DAY 7 & 8 - Wellington

DoubleTree by Hilton Wellington

203 Lambton Quay
Wellington

Standard Room - 2 Nights

Includes: Cooked Breakfast

Check in: 2.00pm

Check out: 11.00am

Description:

Welcome to DoubleTree by Hilton Wellington. Ideally located in the heart of Wellington's central business district, our stylish hotel is just a stone's throw away from the Wellington cable car and we are nearby attractions. We are also just 20 minutes' drive from the airport and 15 minutes' drive from the golf course. Built in 1928, our historical building is full of heritage charm. Our stylish guest rooms boast high ceilings and original features, combined with modern amenities. Our onsite restaurant is open for breakfast and dinner daily.

Room Description:

Enjoy your stay in this modern room with one king Sweet Dreams bed, it boasts a historic 1920's charm with a modern touch. With a smart and functional design, this room features a range of amenities to help you work and relax. The stylish bathroom features a rain shower.



Optional Activity Suggestions (Not included in total cost):

Zest Food Tours: Capital Tastes Additional Costs 2 Adults NZD 377.00

Sightseeing tour of New Zealand's capital with a "foodie twist". Discover unique tastes in New Zealand's coffee capital, as Zest introduces you to the city, architecture and history - whilst sampling local, artisan flavours on this popular tour. Stroll behind the scenes at some of our favourite Wellington food places with your local Zest guide, to taste hidden culinary treasures and meet some of the makers behind some of the city's best food. Tour may include visits to the following local food producers: local coffee roaster (coffee roasting on week days only), artisan chocolatier, award winning Gelato maker, fresh food market and other local food producers' treats.

Operates:

Operates: daily except public holidays*

Departure: 9.30am

Return: 1.00pm

Pick up from and return to the i-SITE Visitor Centre

Walking time approximately 60 minutes

Minimum 2 and maximum 8 passengers

Includes: Wine tasting

Wellington Rover Tours: Half Day Rover LOTR Tour Additional Costs 2 Adults NZD 204.00

The Half Day Lord of the Rings Location Tour is a 'best of' tour, showcasing the best locations around Wellington City! Plus now including the Weta Cave & Weta Cave Tour. This is the best way to see Wellington's Lord of the Rings locations in half a day with the experience of a knowledgeable Lord of the Rings specialist guide.

Operates:

Operates daily

Departure: 8.30am or 1.30pm

Departure Point: Wellington i-site.

Pick up/drop off from inner city accommodation upon request.

Maximum 11 passengers per tour

Duration: 4 hours

Zealandia: Zealandia Night Safari Additional Costs 2 Adults NZD 148.00

Walk through the gates of our predator-proof fence and hear the evening birdsong that has been absent on mainland New Zealand for more than a century. Zealandia by Night offers a full experience of the sanctuary valley and all the magical sights, sounds and senses that only New Zealand can offer. Explore the valley by torchlight as your guide leads you in search of some of the more distinctive sights and sounds of New Zealand's native forest. Experience many of the rare and endangered species and see those who only come out at night. Your group may even see some of the 130 little spotted kiwi who call Zealandia home. Gain insights into New Zealand's natural history and the significance of the unique species within the Māori culture. The tour will end with a replenishing cup of hot kawakawa tea (bushman's tea) in the Visitor Centre.

Operates:

Operates daily, except Christmas Day

Departure: 2.5 hours before sunset

Please allow 1 hour to visit the exhibition before meeting your guide for the guided walk.

Meeting point: Visitors centre ticket desk, 53 Waiapu Road, Karori, Wellington.

Includes: One day time admission per person for the day prior or day after a visitor's night tour.

DAY 9 – Wellington to Picton and on to Nelson

InterIslander

The Interislander Wellington - Picton

Aotea Quay

Wellington

Phone: 0800 802 802

Operates:

Duration: 3hrs 10mins

Kaitaki 0900

Aratere 1445

Kaiarahi 1700 (Mon-Sat only)

Important Information:

**** Drop off your rental car at the ferry terminal depot and check-in as a foot passenger. Your luggage will be taken care of airport style, and you will just have your hand luggage on board.**

At the other end, you will find the rental car depot at the terminal and pick up a new vehicle for your onward journey.**

Each foot passenger may check in two items of luggage, up to a weight of 32 kilograms each and no more than 200 linear centimetres (height/length/width). For occupational health and safety reasons, there are no exceptions to the weight restriction. Additional baggage items in excess of this may be conveyed subject to availability. Additional items and large sporting equipment such as surfboards and canoes will incur an additional charge per item.

Passengers on foot

If you are travelling as a walk-on passenger, check in at the terminal at least 45 minutes prior to departure time. Passengers on foot may carry on small items of hand luggage, but are required to check in all large items of luggage.

Leaving Wellington by sea offers a dramatic view of the cityscape surrounded by green hills. The most inshore of the two islands in the harbour is Soames Island, which until the 1990s was an animal quarantine station, and during World War 1 a detention centre for "hostile aliens". Today it is a recreational area and wildlife reserve. Ward Island (or Makora) is supposedly one of the daughters of Kupe, the legendary Polynesian discoverer of Aotearoa (New Zealand).

On the eastern side of the entrance to Wellington Harbour is Pencarrow Head, surmounted by the country's oldest lighthouse - built in 1859. After passing round Sinclair Head on the west, cruise by the Red Rocks area, resulting from volcanic activity, and home to a colony of seals. Oteranga Bay, further west, is where the highest wind-speeds in New Zealand were recorded in 1968 - 268 km /hour.

The final third of today's crossing to the South Island is through Queen Charlotte Sound, named by Cook after George III's wife, Queen Charlotte Sophia. Cook called there five times during his three visits to NZ. The route follows the subsidiary inlet Tory Channel, named for the New Zealand Company vessel, which sailed through here in 1839, south of Arapawa Island.

Pass Dieffenbach Point where surgeon and naturalist Dr Ernst Dieffenbach accurately calculated the height of the mountains by reading the boiling point of water. At the very head of the sound, you dock at Picton.

DAY 9 & 10 - Nelson

Bayview Bed & Breakfast

22 Bayview Heights
Kaiteriteri

Koru or Pohutukawa Rooms B&B - 2 nights

Includes: Full Breakfast

Check in: 3.00 pm

Check out: 10.00 am

Description:

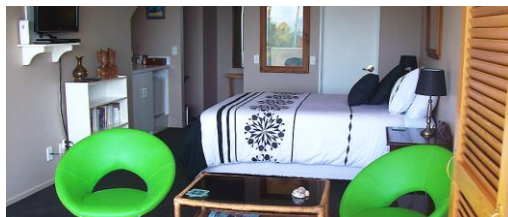
Bayview Bed and Breakfast at Kaiteriteri (known by the locals as Kaiteri) is a seaside resort, located in the Nelson region at the northern point of the South Island of New Zealand, near the world-renowned Abel Tasman National Park.

Its privacy, beauty, clear blue-green water and genuine golden sand will take your breath away. It is one of the most stunning beaches in New Zealand and a dream destination for both holidaymakers and overseas visitors – truly an experience to remember!

Bayview Bed and Breakfast overlooks the Little Kaiteriteri beach, the Tasman Bay and has extensive uninterrupted views for you to enjoy.

Room Description:

Each room is spacious and tastefully decorated with ensuite bathroom, heated towel rail, hair dryer, fridge, flat screen TV, wireless broadband and tea / coffee making facilities. One of our rooms can be converted into either a king bed or a twin room. From your bed or the terrace – watch the sun rise out of the sea; enjoy a sumptuous full breakfast in the dining room with views across the bay.



Optional Activity Suggestions (Not included in total cost):

Wilsons Abel Tasman: Abel Tasman Cruise and Walk Open Day Pass **Additional Costs 2 Adults NZD 153.00**

The Open Day Pass allows you to choose the best tour to suit your needs. Examples include...

BARK BAY FALLS

From the protected beach at Kaiteriteri, take a scenic cruise along the spectacular Abel Tasman coast with its forest fringed bays, sculpted granite headlands and offshore islands. Disembark at Medlands Beach. A ten minute stroll takes you to popular Bark Bay (flushing toilets, shelter and drinking water available at the shady camping area). Swim in calm azure waters, sunbathe or relax in the shade of native forest trees. A forested track around the estuary (four kilometres) takes you to Bark Bay Falls (approx one hour return). Rejoin the cruise at Medlands Beach to return to Kaiteriteri.

SEALS AND BEACH

Cruise the magnificent Abel Tasman coastline north to the golden expanse of Onetahuti. View the fascinating Tonga Island Seal Colony on the way. Land at picturesque Tonga Beach where an abandoned granite quarry site still holds evidence of this failed venture. Enjoy a two hour (five kilometre) walk over a forested saddle and around the golden sands of Bark Bay Estuary with its cascading waterfalls through lush native forest. Continue to Medlands Beach at Bark Bay for your return cruise to Kaiteriteri.

SWING BRIDGE, BUSH AND BEACH

Cruise into the heart of the National Park with full commentary to introduce you to this fascinating coastline. Disembark at idyllic Medlands Beach in Bark Bay. Walk to the long golden sand beach of Anchorage, via Torrent Bay. The track weaves through sunny groves of Manuka and fern between breathtaking views of the granite coast and lush gullies of mature forest. Cross the spectacular swing bridge at Falls River. Allow extra time (20 minutes return walk plus time to relax beside the pool) to take a short side track beside a crystal forest stream to visit tranquil Cleopatra's Pool. Walking time on this route is four hours (eleven kilometres).

Operates:

Departure point: Kaiteriteri

Walking time: flexible

Time ashore: flexible

Departs: 9.20am, 10.30am, 1.00pm - 20Oct to 18Apr (9.20am - 19Apr - 19Oct)

Abel Tasman Charters: The Best Abel Tasman Day Trip Additional Costs 2 Adults NZD 546.00

A scenic cruise, kayaking, swimming and bush walk adventure all in one day, including a visit to the Tonga Island Marine Reserve. Our comfortable launch carries kayaks, snorkeling gear and towels, gourmet lunch, snacks and refreshments are all included. Local beer and wine are complimentary with lunch. Your clients get to meet other traveler's but they still receive the personal attention of the skipper because we limit the number to 10 passengers. You can choose how energetic you want to be.

Operates:

Daily departures 01 November to 31 March. Call to check outside these dates as they will run year round with a minimum of 4 pax.

Departure Location: Stephens Bay

Departure time: 10.00am

Return: 4.00pm

Minimum 4 passengers during low season

Includes:Lunch

DAY 11 – Nelson to Hokitika

Beachfront Hotel

111 Revell Street

Hokitika

Oceanview Room - 1 Night

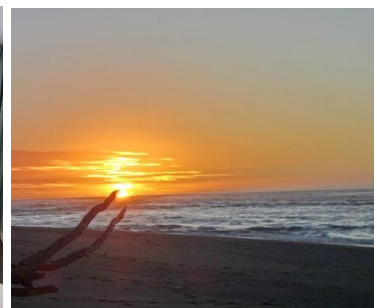
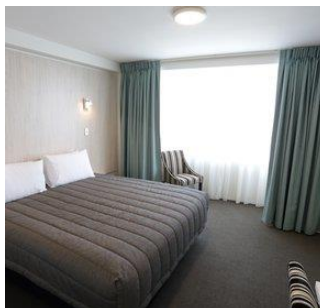
Includes: Cooked Breakfast

Check in: 2.00pm

Check out: 10.00am

Description:

A unique location on the shores of the Tasman Sea and in the centre of Hokitika, means beachcombing and shopping alike are right at your doorstep. The Franz Josef and Fox Glaciers are only an hour and a half to the south. With an onsite restaurant overlooking the beach, all day cafe and bar, the hotel consists of two wings. The new, luxury Ocean View Wing is set right on the beachfront with every room enjoying a stunning ocean view, while the Driftwood Wing offers economy accommodation on the main street of town.



DAY 12 Hokitika to Franz Josef Glacier

Holly Homestead B&B

2900 Franz Josef Highway
State Highway 6
Franz Josef Glacier

Standard Queen Room B&B - 1 Night

Includes: Full breakfast, refreshment on arrival, evening glass of port & internet.

Check in: 3.00 - 8.30pm. Please phone to arrange check in outside these hours as there is no 24 hrs. reception.

Check out: 10.00am

Description:

This colonial homestead is one of Franz Josef's finest old timber homes. Originally a farmhouse built circa 1926, now renovated and extended and perfect for guest comfort with warm native rimu timber features. It is perfectly positioned for guests to have the opportunity to enjoy the outdoor activities the area is known for - hiking, guided glacier walks, scenic flights and kayaking to name just a few.

Room Description:

Cosy double guest room



Optional Activity Suggestions (Not included in total cost):

The Helicopter Line: Heli Hike Additional Costs 2 Adults NZD 892.00

Combine a helicopter flight to the Franz Josef Glacier with a guided walk amongst ice caves, pinnacles and seracs. Highlights include a 10 minute flight over the Franz Josef icefall, glacier landing and pickup, 2 hour hike amongst glacial ice formations with a professional guide. Return helicopter flight to base - all equipment provided, suitable for people of moderate fitness levels.

Operates:

Operates daily

Departure: October to April 9.30am, 12.30 pm & 2.30pm; May to September 11am & 1.30pm

Duration: allow 3hrs (2 hours hiking)

Minimum of 4 passengers required

Weather dependant

Includes: Excursion includes boots and socks, return helicopter flight to the glacier, and guided walk on the ice

DAY 13 – Hokitika to Wanaka

Edgewater Wanaka

54 Sargood Drive
Wanaka

Hotel Room - 1 Night

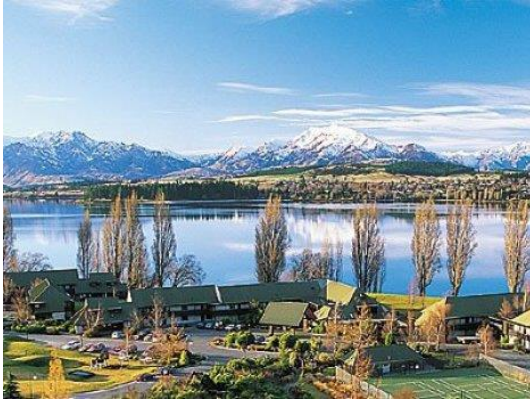
Includes: Cooked Breakfast

Check in: 2.00pm

Check out: 10.00 am

Description:

Unobstructed views and luxury lakeside accommodation. Options include fully serviced resort hotel rooms and one or two bedroom fully serviced apartments. A home away from home that includes conference facilities and both a bar and restaurant, the Edgewater Resort is the perfect venue for intimate holidays, weddings and conferences. Most rooms have fantastic waterviews.



Optional Activity Suggestions (Not included in total cost):

Ridgeline Adventures: Wanaka Highlights Safari Additional Costs 2 Adults NZD 322.00

Wanaka Highlights Safari (October to April) -Summer

This journey offers Wanaka's best scenic locations and an unique insight into Wanaka's rich history, heritage and modern-day farming life. A must if your time in Wanaka is limited. Included is an exclusive visit to a private 30000 acre sheep cattle and deer farm, see inside a sheep-shearing shed, enjoy refreshments at our exclusive hilltop viewpoint high above Lake Wanaka. With breathtaking panoramas of snow-capped mountains this will be a highlight of your New Zealand holiday. Suitable for the whole family.

Operates:

Operates daily

Departure: 8.30 am, 10 am, 1.30 pm & 5.00 pm

Duration: 2.5 hrs

Includes:

Wanaka accommodation pick-up, 4WD Landrover transportation. Private farm access, local guide, interpretation of local fauna, flora and Maori and European history. Optional nature walk. Morning or afternoon tea.

Eco Wanaka Adventures: Lake Cruise & Island Nature Walk Additional Costs 2 Adults NZD 451.00

Join us as we cruise across Lake Wanaka to the remote and magical Mou Waho Island nature reserve, a predator-free home to the rare flightless Buff Weka (extinct on the mainland since 1920). Our Ecoguide will take you on a guided bush walk to reveal the 'island's secret' a lake on top of the island! Enjoy 'high tea' overlooking both of these lakes - where we are often joined by the Buff Weka. Plant a native tree as part of your eco-experience - a unique opportunity to give back to this special island and New Zealand's environment.

Operates:

Operates daily

Departure: 9.00am & 1.30pm

Duration: approx 3 to 4 hours (scenic boat 40 min to 1 hour and walking 1 hour)

Departure Point: jetty beside the marina, car park in Lakeside Road

Minimum of 2 clients required to operate

Includes: Courtesy accommodation pick up and drop off

DAY 15 - 17 - Queenstown

Peppers Beacon Queenstown
33 Lake Esplanade
Queenstown

Hotel Room - 3 Nights

Includes: Cooked Breakfast

Check in: 2.00pm

Check out: 10.00am

Description:

Peppers Beacon Queenstown is situated on pristine Lake Wakatipu, just steps from the busy town centre. You'll be near restaurants and shops, and you'll easily find your way to every activity the area affords. At night the town alights with lively entertainment



Optional Activity Suggestions (Not included in total cost):

Appellation Central Wine Tours: Afternoon Boutique Wine Tour incl. lunch Additional Costs 2 Adults NZD 386.00

An afternoon amongst the boutique vineyards and splendid scenery of Central Otago. Taste wines at 4 of the best boutique vineyards in the Gibbston, Bannockburn and Cromwell regions. Includes a delightful gourmet platter lunch at the award winning Carrick Winery

Operates:

Operates daily except Christmas Day, Boxing Day, Anzac Day 25 Apr and Good Friday

Departure: 11.00am

Return: 4.15pm

Pick up/drop off from accommodation in Queenstown or Arrowtown

Minimum 2 pax, maximum 10 pax

Includes: Platter lunch and all tastings

Dart River Jet Safaris: Dart River Wilderness Safari Additional Costs 2 Adults NZD 513.00

The Wilderness Safari allows you to discover and explore every aspect of this magnificent area through a combination of exciting jet boating, informative guided walk and picturesque back road drive.

Experience the excitement of a thrilling jet boat journey through the Dart's ever-changing braided river system where you'll be amazed by the jet boat's capabilities and awed by your surroundings of breathtaking snow-capped mountains, ancient native forest, waterfalls, and glacial valleys frozen in time. This safari also includes a short guided walk through ancient native Beech forest where your knowledgeable guide will enliven your walk with an informative commentary about the unique flora and fauna of this area. You'll also journey by 4WD safari vehicle along a back-road route, while hearing stories about the surrounding countryside and stopping to view spectacular scenery that has formed the epic backdrop for many international movies, including 'The Lord of the Rings'.

Operates:

Operates daily

Departure: 8.00am and 12.30pm in summer

Departure Point: Queenstown Information Centre, cnr Camp and Shotover Street

Duration: 6 hours approx

Capacity: 84 per departure

Includes: Courtesy transport from/to Queenstown accommodation, lifejackets and spray jackets.

Nomad Safaris: Safari of the Scenes – Glenorchy Additional Costs 2 Adults NZD 413.00

For Lord of the Rings fans, this is the trip where Nomad Safaris really does take you There and Back again. This scenic sightseeing tour includes recognisable film locations and stunning natural scenery. The Glenorchy Safari of the Scenes takes you from Queenstown to Glenorchy stopping at breath-taking viewpoints along the way. Beyond Glenorchy follow the Dart River to the spectacular filming location for Isengard. This location offers stunning views of Mt Earnslaw. Heading to Paradise to discover the location for the Forest of Lothlorien. Leaving Glenorchy and returning towards Queenstown you will stop at 12 Mile Delta to explore the location of the Ithilien Camp.

The Safari of the Scenes - Glenorchy also includes locations from Xmen Origins: Wolverine, and The Chronicles of Narnia: Prince Caspian.

Operates:

Operates daily

Departure: 8:00am & 1:30pm

Duration: 4.25 hours

Min 2 pax to operate, min 4 pax required on NZ statutory holidays.

Pick up/drop off from Queenstown accommodation

Includes: Includes refreshments of tea/coffee/milo with biscuits & cake.

DAY 16 - Queenstown

Real Journeys

Steamer Wharf

Queenstown

Phone: 03 442 7500

Milford Nature Cruise ex Queenstown

Includes: Picnic Lunch

Description:

Get up close and personal with Milford Sound on the leisurely Nature Cruise. As you cruise the length of the fiord, learn about the history of the region and benefit from the knowledge of your specialist nature guide. Experience the spray of a waterfall as you cruise close to sheer rock faces or watch out for dolphins, seals and in season, the rare Fiordland crested penguins. The Nature Cruises has a flexible, extended itinerary which gives you plenty of time to enjoy the scenery and take in the highlights. The experienced skippers will tailor the cruise route on the day depending on the weather and wildlife sightings to ensure you get to see the best that Milford Sound has to offer. Informative, participative and more relaxed, a Nature Cruise is the perfect way to experience Milford Sound to the fullest. Complimentary tea and coffee is available on board and lunches can be pre booked.

Operates daily

Departure time: 01 Oct - 30 Apr: 7.15am ; 01 May - 30 Sep: 6.55am

Departure point: Real Journeys Visitor Centre, Steamer Wharf, Queenstown

Return: 8.00pm / 7.45pm

Hotel pick ups available from central properties.

QUOTATION

Includes:

- Full documentation (Welcome Letter, Vouchers, Journey Book, Map Book)
- 24/7 support
- Vehicle, accommodation & activities and meals as outlined.
- EXCLUDES options extra activities

Total for 2pax as outlined SEK 51150 :-

Based on High season Pricing (Oct-March). Peak periods and special event surcharges may apply.
